

Faculty Matters

UF College of Medicine
UNIVERSITY of FLORIDA

December 2015

<http://facultyaffairs.med.ufl.edu/>

In This Issue

[Faculty Forward](#)

[Spotlight on](#)

[Education](#)

[Save the Date](#)

[Welcome](#)

[New Grants](#)

[Big Picture](#)

[Mindfulness](#)

[REDCap](#)

[AAW](#)

[University Committee](#)

[FEO Opportunity](#)

[CTSI](#)

[Hospitality Training](#)

[In the News](#)

[Did you Know](#)

[Faculty Council](#)

[Faculty Development](#)



Faculty
Forward
is coming!

College-wide survey
will arrive in your
inbox in January. Be
ready to share your
views.



New coat, new responsibilities



Friends and family burst into cheers from the seats of the Curtis M. Phillips Center for the Performing Arts as each of the 137 students received crisp white coats during the Mark S. Gold, M.D. '75, Distinguished Professor and Alumnus White Coat Ceremony Nov. 22, marking a rite of passage in the UF College of Medicine and the transition from basic to clinical science studies.

"As you slide your arms into your white coat today, you will now be shouldering a new set of responsibilities," said UF College of Medicine Dean Michael L. Good, M.D., in his opening remarks. "You will be wearing the uniform of our profession, and with it comes a responsibility to your patients - to earn their trust and to give them your very best skills and, most importantly, your compassion."

More Pictures

Congratulations

Medical students mentored by Dr. Chris Cogle, Cindy Medina (MS2) and Shannon Stockton (MS2) were selected for presentations on the national stage at the recent American Society of Hematology meeting. Both also won prestigious Achievement Awards from the

American Society of Hematology, including a \$500 research prize each.

[Click to read more](#)

SAVE-THE-DATES!

****Medical Education Week Seminar Series****

Sponsored by The UF COM Society of Teaching Scholars

March 14-18, 2016

12-1:00 PM, Room TBA

Video-conference to Jacksonville

A week's schedule of events, sponsored by The Society of Teaching Scholars, to recognize and celebrate the education programs at the College of Medicine. During the week's activities, guest speakers address various aspects of medical education, for students, residents, and faculty.

****College of Medicine Celebration of Research Week****

Sponsored in part by Joseph and Leila Applebaum Foundation

Title: Pathogenesis of Severe Acute Respiratory Syndrome and Middle East Respiratory

Syndrome

Stanley Perlman, MD, PhD

Professor

Departments of Microbiology and Pediatrics

University of Iowa

February 22-26, 2016

Kickoff begins February 22, 2016

Stephen C. O'Connell Center

5:30-8:30PM

*Call for abstracts coming soon

Office of Research Affairs

352-273-5995

WELCOME NEW FACULTY!

[Click Here for Photos and More Information](#)

David Andrews M.B.B.S. (M.D.) Clinical Assistant professor, Department of Dermatology

Antonella Bianchi M.B.B.S. (M.D.) Clinical Associate professor, Department of Medicine Division of Endocrinology, Diabetes and Metabolism

Jodi Bubenik Ph.D. Assistant Scientist, Department of Biochemistry

Paul Castillo Caro M.B.B.S. (M.D.) Clinical Assistant professor, Department of Pediatrics Division of Hematology/Oncology
Vincent Daniel M.D. Clinical Associate professor, Department of Surgery
Gauri Dhir M.B.B.S. (M.D.) Clinical Assistant professor, Department of Medicine Division of Endocrinology, Diabetes and Metabolism
Kelly Gurka Ph.D., M.P.H. Assistant professor, Department of Epidemiology
Matthew Gurka Ph.D. Professor, Department of Health Outcomes and Policy
Shuang Huang Ph.D. Professor, Department of Anatomy
Ruchita Kachru M.B.B.S. (M.D.) Clinical Assistant professor, Department of Pediatrics
Bilal Khodr M.D. Clinical Assistant professor, Department of Pediatrics
Jeremy McIntyre Ph.D. Assistant professor, Department of Neuroscience
Christopher Newton M.D. Clinical Associate professor, Department of Medicine Division of Endocrinology, Diabetes and Metabolism
Ann-Marie Orlando Ph.D. Research Assistant professor, Department of Psychiatry
Sonia Sharma M.B.B.S. (M.D.) Clinical Assistant professor, Department of Medicine Division of Hospital Medicine
Wendy Stroh D.O. Clinical Associate professor, Department of Pathology and Laboratory Medicine
Eileen Yale M.D. Clinical Assistant professor, Department of Medicine Division of General Medicine

Meet the COM Faculty for Focus Areas of UF Preeminence

[William Hogan MD. Professor, Department of Health Outcomes & Policy.](#)

[Herbert Schweizer PhD. Professor, Department of Molecular Genetics and Microbiology](#)

[Matthew Merritt PhD. Associate Professor, Department of Biochemistry and Molecular Biology](#)

[Dorina Avram PhD Professor, Department of Medicine, Division of Pulmonary, Critical Care & Sleep Medicine](#)

[Steve Munger PhD. Professor, Department of Pharmacology & Therapeutics](#)

[Lee Sweeney PhD. Professor, Department of Pharmacology & Therapeutics](#)

[Carol Mathews MD. Professor, Department of Psychiatry](#)

[J. Andrew Berglund PhD. Professor, Department of Biochemistry and Molecular Biology](#)

[Josephine Clark-Curtiss PhD. Professor, Department of Medicine, Division of Infectious Diseases and Global Medicine](#)

[Karyn Esser PhD. Professor, Department of Physiology and Functional Genomics](#)

Cancer Preeminence Program Faculty

[Matthew Gurka PhD. Professor, Department of Health Outcomes & Policy](#)

[Shuang Huang PhD. Professor, Department of Anatomy and Cell Biology](#)

[Jonathan Licht MD. Professor, Department of Medicine, Division of Hematology and Medical Oncology](#)

[David Tran MD. PhD. Assistant Professor, Department of Neurological Surgery](#)

NEW GRANTS AWARDED!



George L. Drusano, MD
Professor of Medicine
Lake Nona

Dr. Drusano and **Arnold Louie MD**. Professor of Medicine at Lake Nona have been awarded a National Institutes of Health new R01 grant entitled, "Rapid Identification of Optimal Combination Regimens for Pseudomonas Aeruginosa".

See yourself in The Big Picture

New employee orientation video created by our communications teams

We're happy to introduce a staff welcome video, which will be shown during orientation and training. The video is designed to welcome new faculty, staff, residents and volunteers to the organization and explain the scope of how we are moving medicine forward.

The video outlines UF Health's vision and strategic priorities, and highlights our patient care, education, research and community health missions. It spotlights the people at the heart of UF Health and features our hospitals, outpatient programs, health science colleges and research institutes.

Three professional actors serve as hosts, and **David S. Guzick, M.D., Ph.D.**, UF senior vice president for health affairs and UF Health president, shares a welcome message.

The video was produced in-house: The scriptwriting, images, animation and editing were done by UF Health Communications teams. We especially thank Creative Services for making the script come to life!

In addition to new hires, existing faculty and staff are encouraged to view the video and learn more about UF Health.

You can view the video on the Bridge, under "Education," then "Faculty/Staff Development."

We hope the messages resonate with you and make you feel proud to be a part of the UF Health family.



UF Health Staff Welcome Video

Mindfulness Relaxation Minutes

How:

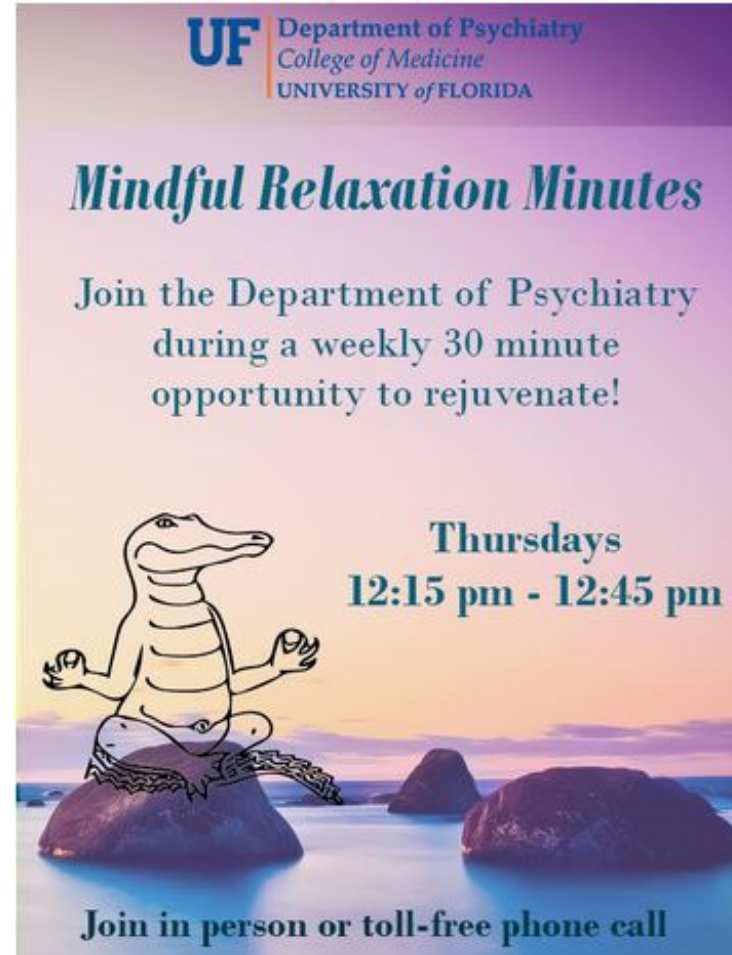
In person

PolyCom Conferencing at the Medical Office Building (MOB), Springhill clinic, and Vero Beach locations.

Dial-in number is 75011.

Toll-free phone call to 1-888-670-3525 (when prompted, input the participant passcode 9372794023 then #)

Where:



12/17/2015

UF Health Medical Office Building (MOB):
4037 NW 86th Terrace
Room 3242
Gainesville, FL 32606
Call-in available via MOB 3157

Click [here](#) for more information

Educational Scholarship Program

The Educational Scholarship Program (ESP) is made up of a group of UF Health Science Center faculty members interested in supporting education research and scholarship in health sciences education. Monthly brown bag lunch sessions focus on a variety of topics designed to help faculty members take a more scholarly approach to their teaching and education innovation.



Please join us from 11:45 am to 12:45 pm in Communicore room C2-33 and feel free to bring your lunch. Soft drinks will be available, courtesy of the Office of Interprofessional Education. Videoconferencing will be available for faculty at HSC Jacksonville in room 4003.

Visit the [Educational Scholarship Program webpage](#) for meeting dates and details.

We look forward to seeing you!

HSC Faculty Development

Introduction to REDCap offerings in 2016

To register go to the myTraining website: <http://mytraining.hr.ufl.edu>

- Click on "University of Florida"
- In the 'Activity Search' search box (upper left-hand side) type in "REDCap"



***If you experience issues with the myTraining site, please contact them at: training@health.ufl.edu

Course description: This lecture and demonstration provides a basic overview of the Research Electronic Data Capture (REDCap) system; how REDCap can speed time to database creation and deployment; best practices; and provides a general overview of its many powerful data collection and management features. This course is directed towards **new users** or those with **little experience** with using REDCap.

NOTE: These new course sections (year 2016) cover the same material as previous sections (year 2015) so first time attendees will be given priority if classes fill up.

Title	Location	Date	Start Time	End Time
Introduction to REDCap	@ AHC C3-13 (Communicore)	1/19/2016	11:00 AM	12:30 PM
Introduction to REDCap	@ AHC C3-13 (Communicore)	1/28/2016	3:00 PM	4:40 PM
Introduction to REDCap	@ AHC C3-13 (Communicore)	2/04/2016	10:00 AM	11:30 AM
Introduction to REDCap	@ AHC C3-13 (Communicore)	2/15/2016	1:00 PM	2:30 PM
Introduction to REDCap	@ AHC C3-13 (Communicore)	3/01/2016	3:00 PM	4:40 PM
Introduction to REDCap	@ AHC C3-13 (Communicore)	3/17/2016	12:00 PM	1:30 PM
Introduction to REDCap	@ AHC C3-13 (Communicore)	3/28/2016	3:00 PM	4:30 PM
Introduction to REDCap	@ AHC C3-13 (Communicore)	4/13/2016	11:00 AM	12:30 PM
Introduction to REDCap	@ AHC C3-13 (Communicore)	4/28/2016	11:00 AM	12:30 PM



Upcoming Networking Lunch from 11:30 a.m. - 1 p.m

January 6th - Arredondo Cafe (in the Reitz Union)

February 4th - Piesanos on University Ave.)

No need to RSVP, just come on in!

Our Vision:

To connect professional women working in the University of Florida community in order to promote personal growth, career development and lifelong learning - and to have some fun!

Join us: To join or renew your AAW membership (our year started on June 1st), please visit aawufl.org. Dues are used to support scholarships for female doctoral students. During the academic year, we provide valuable and enjoyable programming, monthly networking luncheons, and fun social events!

Join the board: Want to be more involved? AAW welcomes new individuals to serve on the board. If you are interested in serving the membership, please contact [Brandi Ormerod](#), AAW president.

Connect with us: [AAW Facebook Page](#) / [AAW LinkedIn Group](#)

University Committee Nominations 2016-2017

Each year the University of Florida offers faculty and staff employees the opportunity to participate in its governance through various university committees, boards, and councils. A list of these groups can be found at UF Faculty Senate website (www.senate.ufl.edu).

The Senate Nominating Committee invites nominations, including self-nominations, for **fall 2016** appointments.

The nomination form is posted on the Senate website (<http://www.senate.ufl.edu/nominations>) . Please fully complete the form before submitting as this information will be used in the voting process for senate committees and councils elections.

If you choose to nominate a colleague, please confirm their willingness to serve before submitting. Also, please verify that you (or your nominee) meet the requirements, if any, to serve on the committee(s). Note: the nomination form includes the Senate Councils and only current faculty senators are eligible for service on these.

On the form you may indicate your (or your nominee's) willingness to serve "as needed" on any committee, which will increase the likely of an appointment.

Please submit the completed form by **5 PM, December 18, 2015**.

On behalf of the committee, thank you for your consideration of this opportunity to make unique and meaningful contributions to the University of Florida. If you have any questions concerning these committees, please contact Brian Keith, Chair, Senate Nominating Committee at bwheith@ufl.edu

Faculty Enhancement Opportunity Award Applications

FEO applications for Spring 2016 funding will be due **February 17, 2016** to the COM-FEO review committee. COM faculty are also required to submit a letter of intent through Faculty Council (simple email works great) to quillen@ufl.edu. Details of the FEO program and the application form are available at: <http://www.aa.ufl.edu/FEO>

Questions about the overall program should be directed to Associate Provost Angel Kwolek-Folland c/o Ms. Ileana McCray at immcray@aa.ufl.edu or David M. Quillen, MD Chair, chair COM-FEO review committee, at (quillen@ufl.edu).

CTSI Opportunities

Pilot Project Awards

The UF Clinical and Translational Science Institute is pleased to invite applications for CTSI Pilot Project Awards that support patient-oriented clinical research utilizing CTSI services. Applications will be accepted on a rolling basis through March 31, 2016.

UF faculty members and UF trainees (residents, postdocs, fellows) can apply. All applicants must demonstrate that proposed pilot projects will provide critical preliminary data to support extramural applications.

AWARD DETAILS AND TIMELINES

This RFA invites pilot project proposals for patient-oriented clinical research, which is defined as research in which an investigator or colleague directly interacts with human subjects. The CTSI will make a total of up to \$150,000 available through this RFA.

- **Award Amounts: Award amounts vary but typically do not exceed \$25,000.**
- **Eligible Venues: Proposed research can be conducted in any appropriate UF Health facility, with preference given to use of the UF Clinical Research Center.**
- **Award Funding Period: Up to 18 months from notice of award.**

RFA, APPLICATION FORM AND CONTACT FOR QUESTIONS

KL2 Program for Junior Faculty

The UF Clinical and Translational Science Institute (CTSI) is now accepting applications for its KL2 Program for Junior Faculty, which provides two years of financial support and research training to develop the skills necessary to build a well-funded, collaborative career in clinical/ translational research.

Qualified faculty at the rank of assistant professor with an M.D., Ph.D. or equivalent degree in the health sciences are encouraged to apply. The CTSI welcomes applicants from any of the UF Health Science Center's six colleges.

An **informational session describing the program and application process will be held Monday, November 16, 2015 at 12:00**

noon in Room m624 (6TH floor, Medical Science Building - the Dragstedt Conference Room) - directions below. Attendance is strongly recommended for anyone interested in the program. Refreshments will be served.

Applications will be due by 5 p.m. on Friday, December 18, 2015. Interviews will be scheduled in January, 2015. Final details about the application packet and funding amounts will be posted soon.

One or two new KL2 Scholar(s) will be named with an anticipated start date in February, 2016.

For more information, contact:

Thomas A. Pearson, MD, PhD, Director, KL2 program, 352-733-1800, tapearson@ufl.edu

Marian Limacher, MD, Co-Director, KL2 program, 352-294-5343, limacmc@medicine.ufl.edu

Visit the following webpage for complete details, including the RFA, application form and contact for questions:

www.ctsi.ufl.edu/pilot

Hospitality Training

"Hospitality for Staff"

training is held every Monday (except the week of Thanksgiving, Christmas and New Year's). It's held at the Facilities Administration Bldg., (FAB) from 8:00am - 11:45am and participants should arrive 15 minutes early for registration. [Here are the dates for the rest of 2015:](#)

Monday, December 14, 2015

Again, 8:00am - 11:45am (arriving 15 minutes early for registration) @ FAB - click on link below for map/directions to the FAB

[Map to Facilities Administration Building](#)

Anyone wanting to attend the Hospitality class on a Monday morning will need to pre-register with HRD at hrd@shands.ufl.edu

We need your Full Name, UFID#, Dept. and Position and the date you wish to attend. Once registered you will receive an email confirmation.

PS - If employee has a decal, they should park in their normal parking space. If not, then employees may park in the patient/visitor garage # 10 located on the corner of Newell Drive & Archer. We can provide a ***reduced parking voucher***. When employee leaves the garage they will need to ***pay \$4.00*** (vs. the normal \$10.00 parking fee).

IN THE NEWS!

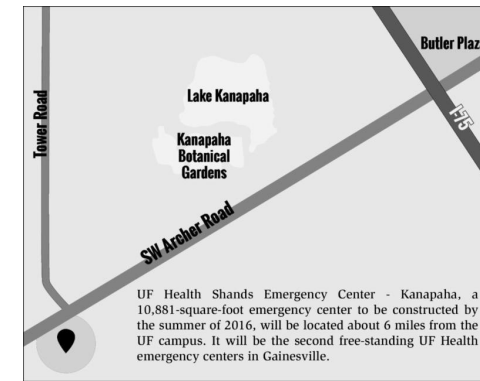
HealthStreet

RESEARCH HELPING PEOPLE



UF wins grant to address health issues in Putnam, Union counties

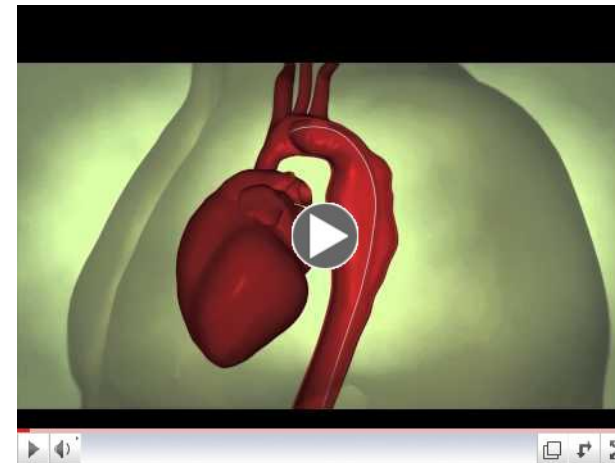
[Continue Reading](#)



UF Health to build new E.R.

[Continue Reading](#)

DID YOU KNOW?



**See how Dr. Adam Beck,
Vascular Surgeon, corrects
thoracic aortic aneurysms using
a catheter-based stent**



**Next meeting, Tuesday, January 5, 2016 at
5:00 pm in the Hugh Hill Conference
Room**

Check the website for information about meetings and activities:

<http://facultycouncil.med.ufl.edu/>



**Upcoming Educational & Professional
Development Seminars:**

Faculty Professional Development Series:

*Wednesday, January 20th, "Mindfulness Based Stress Reduction"
from 5:00 pm to 6:30 pm, Dr. Irene M. Estores

Medical Education Building Room 128.

[CLICK HERE TO REGISTER](#)

Faculty Educational Development Series:

- January 13, 2016, 4:00-6:00 pm, Linda Behar-Horenstein, PhD, [*Overview of Qualitative Research Methods: Discovering Your Qualitative Lenses*](#)
- February 17, 2016, 4:00-6:00 pm, Cyndi Garvan, PhD [*Making Sense of it All: Interpreting Results from Statistical Output*](#)
- March 23, 2016, 4:00-6:00 pm, Cyndi Garvan, PhD [*Saving Everyone's Time and Energy: Practical Tips for Database Design*](#)
- April 20, 2016, 4:00-6:00 pm, Linda Behar-Horenstein, PhD [*Using Qualitative Coding To Make Sense Out of Text: What Did Participants Tell Me?*](#)

All workshops will be held in Communicore room **C2-33**

View previous seminars online at

<http://facultyaffairs.med.ufl.edu>



Connect With Us:   

